

Liuqiu Diving Info



Taiwan
THE HEART OF ASIA

Climate

A small island off the southwestern coast of Taiwan, Liuqiu has a pleasant warm weather all year round. However, it is highly recommended for travelers who particularly enjoy diving to visit the island in winter. The sea condition is easily influenced by monsoon and typhoon during summer season, causing rough wave and poor visibility. In winter, the Taiwan's Central Mountain Range provides a great shelter to Liuqiu from seasonal wind which brings better visibility and calm sea than the summer. It is delightful to visit Liuqiu anytime but any water activities is recommended during November to April.



Transportation

Public Transportation

From HSR Zuoying station, travelers can direct transfer Dapeng Bay-Liuqiu Express Line of Taiwan Tourist Shuttle Bus. It takes about 50 minutes to call at Donggang Ferry Terminal, Dapeng Bay Marina and Dapeng Bay Visitor Center.

There are also buses bound for Donggang from Kaohsiung train station, HSR Zuoying station and Kaohsiung International airport. It takes about 60 minutes from Kaohsiung to Donggang. After getting off the bus, it takes about 10 minutes walk to Donggang Ferry Terminal from the bus station.

Ferry Info

Boarding point :

Dapeng Bay Marina to Liuqiu Island
Donggang ferry terminal to Liuqiu Island



Please scan the QR code to get further detail information.

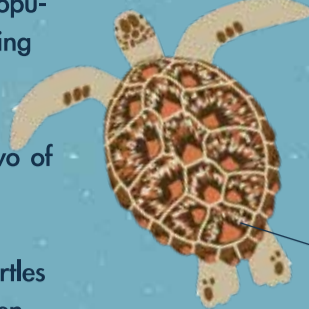
About Sea Turtles

The rules of swimming with sea turtles : **DO NOT** Touch/Feed/Harass Chase/Surround

Liuqiu is the densest populated habitat for foraging sea turtles in Taiwan. Green Sea Turtle and Hawksbill Turtle are two of the main species living around the island. Yet, 99% of the sea turtles that are spotted is green turtle.

There are 5 out of 7 sea turtle species which are distributed around Taiwan, and are protected under Taiwan's wildlife protection law. For whom violates the law will face a fine and punishment.

Green Sea Turtle



1 claw on each of front and rear flippers

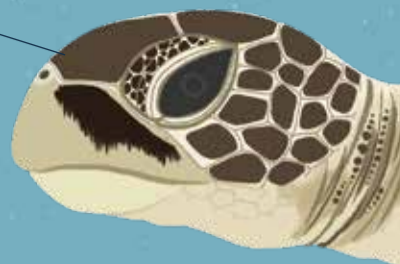
Hawksbill Turtle



2 claws on each of front and rear flippers

The scutes are overlapping and with serrated edge.

Green Sea Turtle



One pair of prefrontal scales

Hawksbill Turtle



Two pairs of prefrontal scales

5 central carapace scutes
4 lateral scutes on either side

Hawksbills are named for their pointed beak.

The sex determination of turtles is temperature dependent. The hatchlings will be female if eggs are incubated above 30°C, below 28°C will be male.



Breathing

Sea turtles are air-breathing reptiles. They need to surface regularly to breathe.



Cleaning

fishes feeds on algae which covered flippers and shell of turtles.



Foraging

Adult green turtles feed mainly on seaweed and seagrass. Hawksbill turtles feed mainly on sponge and soft reef invertebrates.



Mating



Adult

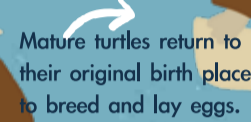
Sea turtles take about 20 years to reach maturity.



Cleaning- scrub

by scrubbing its carapace on corals and rocks

Resting



Mature turtles return to their original birth place to breed and lay eggs.

Nesting

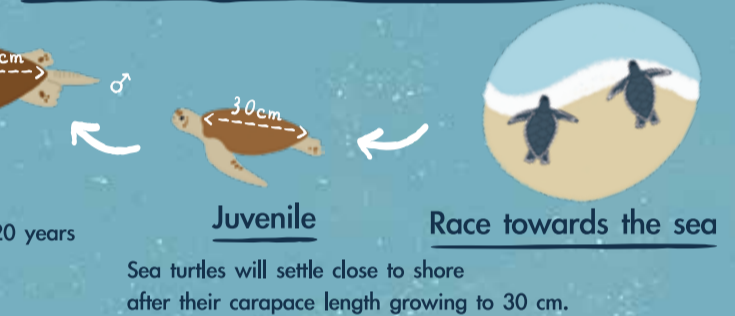
Taiwan's nesting season occurs from June to October. Female turtles come on the beach at night to lay a nest. Please avoid any activities on the beach after sunset to reduce disturbance.

After 50-60 days.



Hatchling

Life Cycle of Sea Turtles









Common Sea Creatures



Dangerous Sea Creatures

Diving Notification

-  No swimming at harbor entrance
-  Make a Dive plan Don't dive solo.
-  Hire local dive guide who is familiar with dive sites
-  Avoid chemical sunscreens
-  Respect marine life and local culture
-  Reduce single-use plastic
-  Snorkelers and free divers should bring buoys
-  Use the boat buoy to avoid damaging coral reefs by anchoring



List of Dive Sites

- B Beginner: without diving certification or OW scuba divers
- I Intermediate: AOW scuba divers or with deep dive experience
- A Advanced: AOW divers or above with deep dive and drift dive experience

No	Dive Site	Level	Max Depth	Notice
1	Vase Rock	B	12m/Shore Dive	Harbor Entrance
2	Beauty Cave	B	15m/Shore Dive	Strong Current
3	DuoZaiPing	I	20m/Boat Dive	Strong Current
4	Wreck Reef	I	22m/Boat Dive	
5	Pole Reef	I	26m/Boat Dive	Strong Current
6	SanFu Port	B	16m/Shore Dive	Harbor Entrance
7	Venice Shipwreck Reef	A	32m/Boat Dive	Strong Current

No	Dive Site	Level	Max Depth	Notice
8	Black Devil Cave	A	25m/Boat Dive	Strong Current
9	ZhenHai Battleship Wreck	A	26m/Boat Dive	Strong Current
10	Houshi Fringing Reef	B	10m/Shore Dive	
11	DaFu West	B	18m/Shore Dive	Harbor Entrance
12	Lobster Cave	B	18m/Shore Dive	Harbor Entrance
13	Steel Reef	A	32m/Boat Dive	
14	ZhongAo Shipwreck Reef	A	26m/Boat Dive	Strong Current